

Accuracii™ AT

DUAL CHANNEL THERMAL AND CCD CAMERA SYSTEM

Vumii's Accuracii AT cameras combine two advanced video channels on an integrated ruggedized 360° pan-tilt positioner to deliver 24/7 covert security.

Accuracii camera systems are available in several athermalized lens configurations that offer threat detection beyond 6km.

Accuracii AT is ruggedized to withstand the harshest weather and environmental conditions, including rain, direct sunlight, high humidity and dust.



KEY BENEFITS

Dual Channel System for 24/7 Operation

Detect and assess threats using both the color day CCD channel and the day/night thermal channel.

Dual Output Video

View or record both the color CCD and the thermal video channels at the same time.

Simple Integration

Pelco-D protocol control and scene awareness software provide easy integration and ease-of-use.

Rugged Design

Designed and certified to IP66, hot, cold, dusty, and other harsh environments.

AVAILABLE CONFIGURATIONS

Thermal Imager:

- 17 μ : 640 x 480 (NTSC/PAL)
- 25 μ : 320 x 240 (NTSC)
- 25 μ : 384 x 288 (PAL)

Thermal Optics:

- 19mm Athermalized
- 35mm Athermalized
- 60mm Athermalized
- 100mm Athermalized

Visible Imager

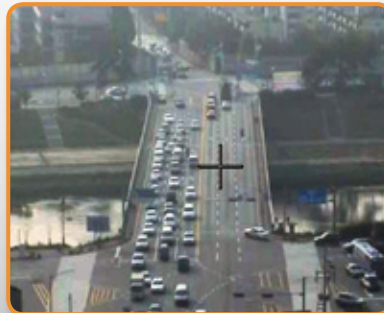
- 1/4" color CCD camera

Visible Optics:

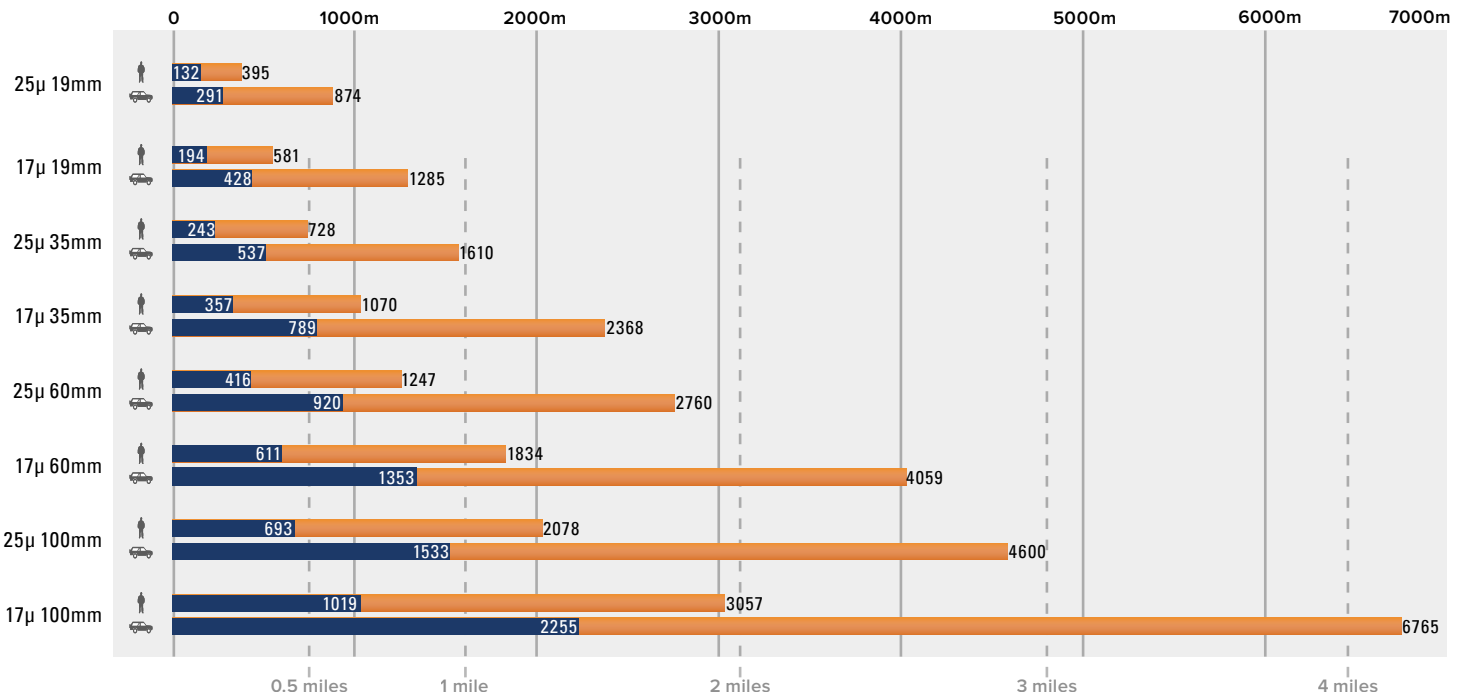
- Continuous Zoom 3.3 - 119mm

Video Output:

- PAL or NTSC



Accuracii AT Range Performance



= Human Subject
Size 1.8m x 0.6m

= Vehicle Subject
Size 2.3m x 2.3m

Detection 2 lines on subject
Recognition 6 lines on subject

* Performance dependent on atmospheric conditions

Accuracii AT Specifications

Imaging Characteristics	Day Channel	Thermal Channel
Imager Type	1/4" Color CCD	Uncooled Microbolometer 7.5-14μ
Resolution	752 x 582 (PAL) 768 x 494 (NTSC)	17μ: 640 x 480 (PAL/NTSC) 25μ: 384 x 288 (PAL) 25μ: 320 x 240 (NTSC)
NETD		NETD: <50° mK
Video Output	NTSC (30Hz) / PAL (25Hz), 1.0V p-p, 75ohm	RS-170 (30Hz) / CCIR (25Hz), 1.0V p-p, 75ohm
Lens Options	Continuous Zoom 3.3 - 119 (36x)	Athermalized 19mm, 35mm, 60mm, 100mm
Horizontal Field of View	60.2° - 1.8°	17μ: 19mm: 33.2° (PAL/NTSC) 25μ: 19mm: 29.3° (PAL) 24.4° (NTSC) 17μ: 35mm: 17.8° (PAL/NTSC) 25μ: 35mm: 15.7° (PAL) 13.1° (NTSC) 17μ: 60mm: 10.4° (PAL/NTSC) 25μ: 60mm: 9.2° (PAL) 7.6° (NTSC) 17μ: 100mm: 6.2° (PAL/NTSC) 25μ: 100mm: 5.5° (PAL) 4.6° (NTSC)
Electro-Mechanical Characteristics	Day Channel	Thermal Channel
Unit Dimensions		10.6" (h) x 17.0" (w) x 7.1" (d) 269mm (h) x 431mm (w) x 180mm (d)
Unit Weight		35.3lbs (16kg)
Environmental Rating		IP66
Certifications		CE, FCC
Power Input		24VDC (115/230VAC with optional Electronics Unit)
Power Consumption		40w typical; 120w max
Operating Temperature		-40° to +140° F (-40° to +60° C)
Control Characteristics	Day Channel	Thermal Channel
Communication Protocol		Pelco D, Vumii (SDK Available)
Control Connection		Serial: RS422/RS485
Control Type		Serial or TCP/IP (with optional electronics unit)
PTZ Characteristics	Day Channel	Thermal Channel
Pan Range		360° Continuous
Tilt Range		-90° to +90°
Pan Speed		Variable Speed, 0 - 60°/sec max